

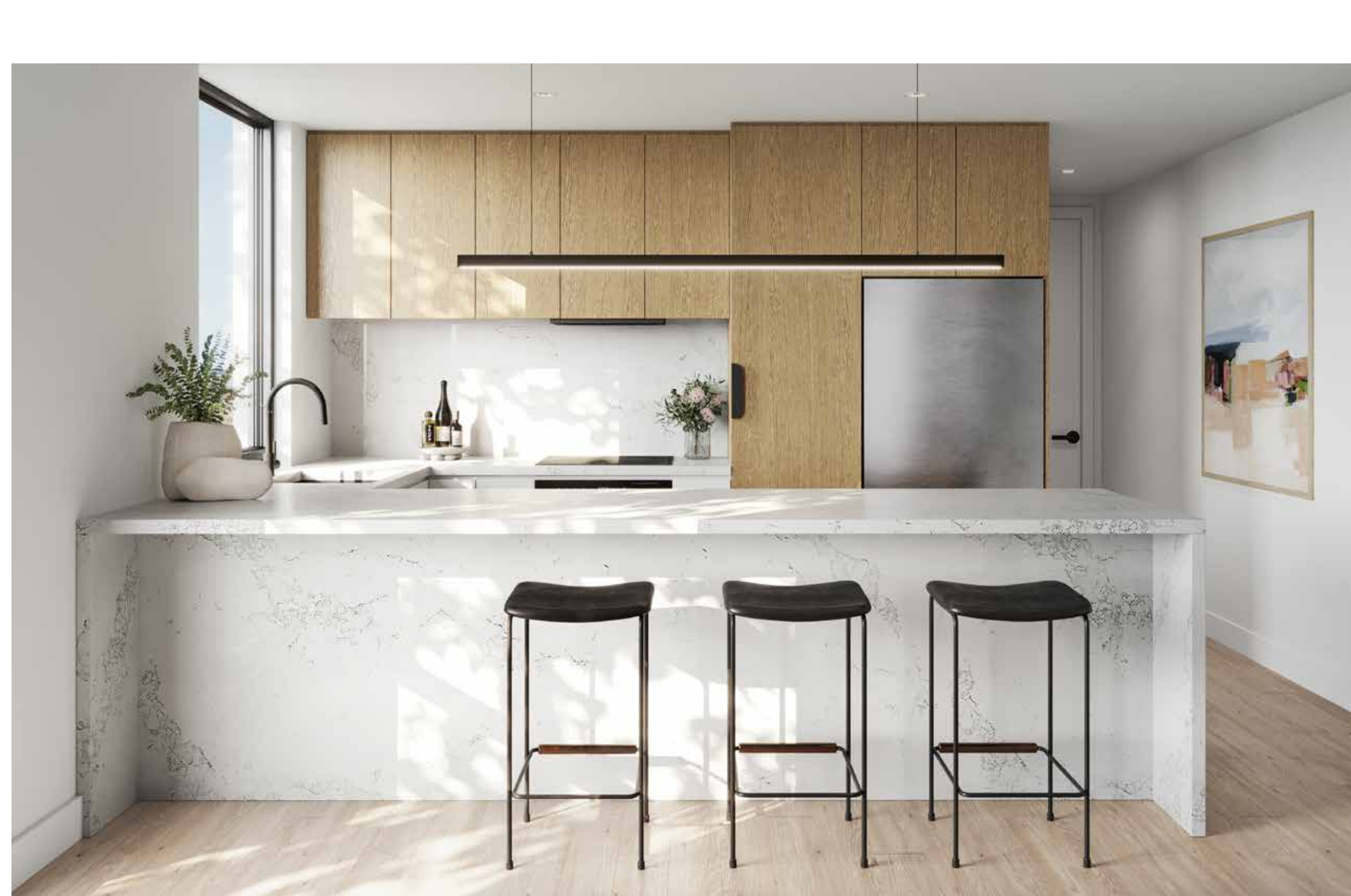


RENDER CAROUSEL

THE CENTRE OF LIVING
IN THE VIBRANT HEART
OF FOOTSCRAY



RENDER CAROUSEL



INTELLIGENT DESIGN

Thoughtfully designed to accommodate the bustling and diverse lifestyle of the modern resident.

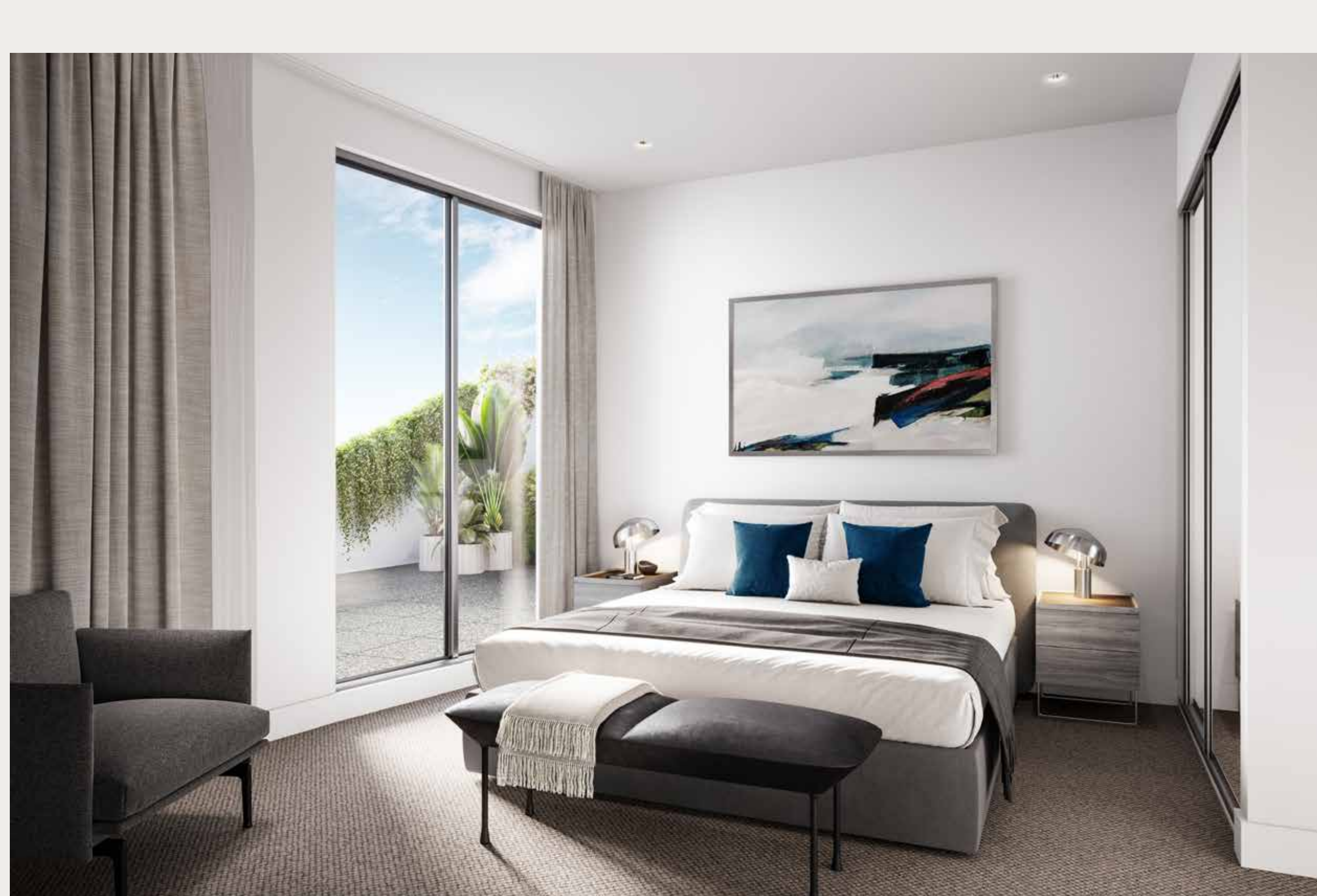
Cornerstone apartments boast an ensemble of clever design choices, including built-in joinery, a tucked-away European laundry, spacious open-plan living and abundant storage solutions. Residents are spoilt for choice between two schemes and expansive, private balconies that offer effortless indoor/outdoor living.

NEST IN YOUR
PRIVATE SANCTUARY

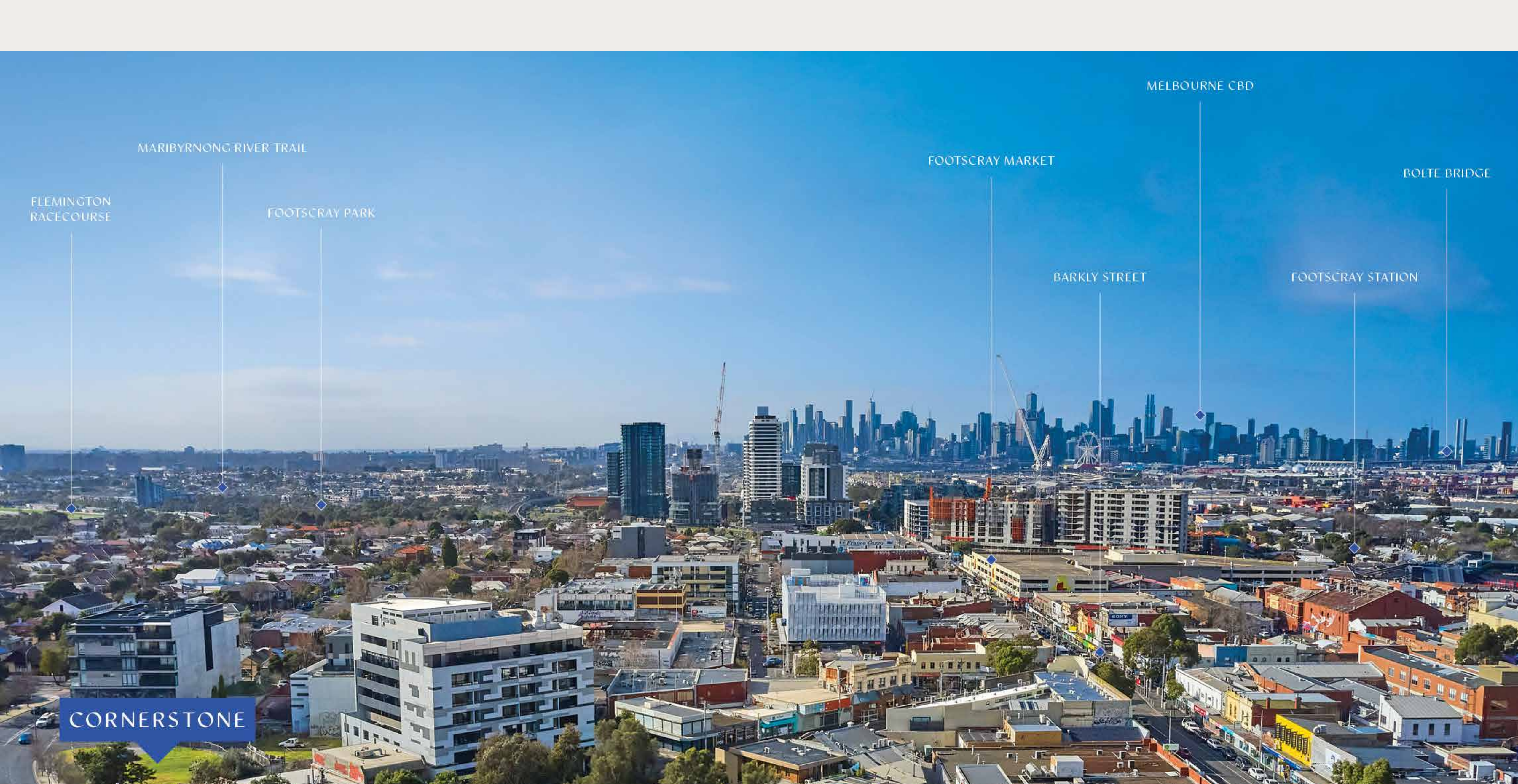
A tranquil retreat, each residence has been considerably crafted with liveability and comfort in mind.

Bedrooms feature integrated joinery that maximises storage for the modern resident, as well as double-glazed windows that bathe the residence in an abundance of natural light.

Bathrooms are an oasis of calm, featuring handpicked brushed nickel or matte black tapware, natural stone finishes and clever storage solutions.



Artist's Impression



AN EXPERIENCED TEAM



Developer



Project Architect & Interiors



Architect

WORK, STUDY AND PLAY IN
THE HEART OF FOOTSCRAY

Ideally located within metres of Barkly Street, residents are a short walk away from a vast array of renowned eateries and bars.

REASONS TO INVEST
IN FOOTSCRAY

In recent years, Footscray has undergone urban renewal as a result of a spill-over of growth from Melbourne.

Teaming with investment opportunity, the once-industrial suburb boasts a local culture and vibrancy unlike any other, as population is projected to more than double by 2031.

A 5km extension of Melbourne's CBD, Footscray is home to the esteemed Victoria University and VU Whitten Oval. Surrounded by a myriad of parklands and exceptional transport connections, Footscray is recognised by the Victorian Government as a priority precinct, with total Government infrastructure investment estimated at \$31 billion by 2026.



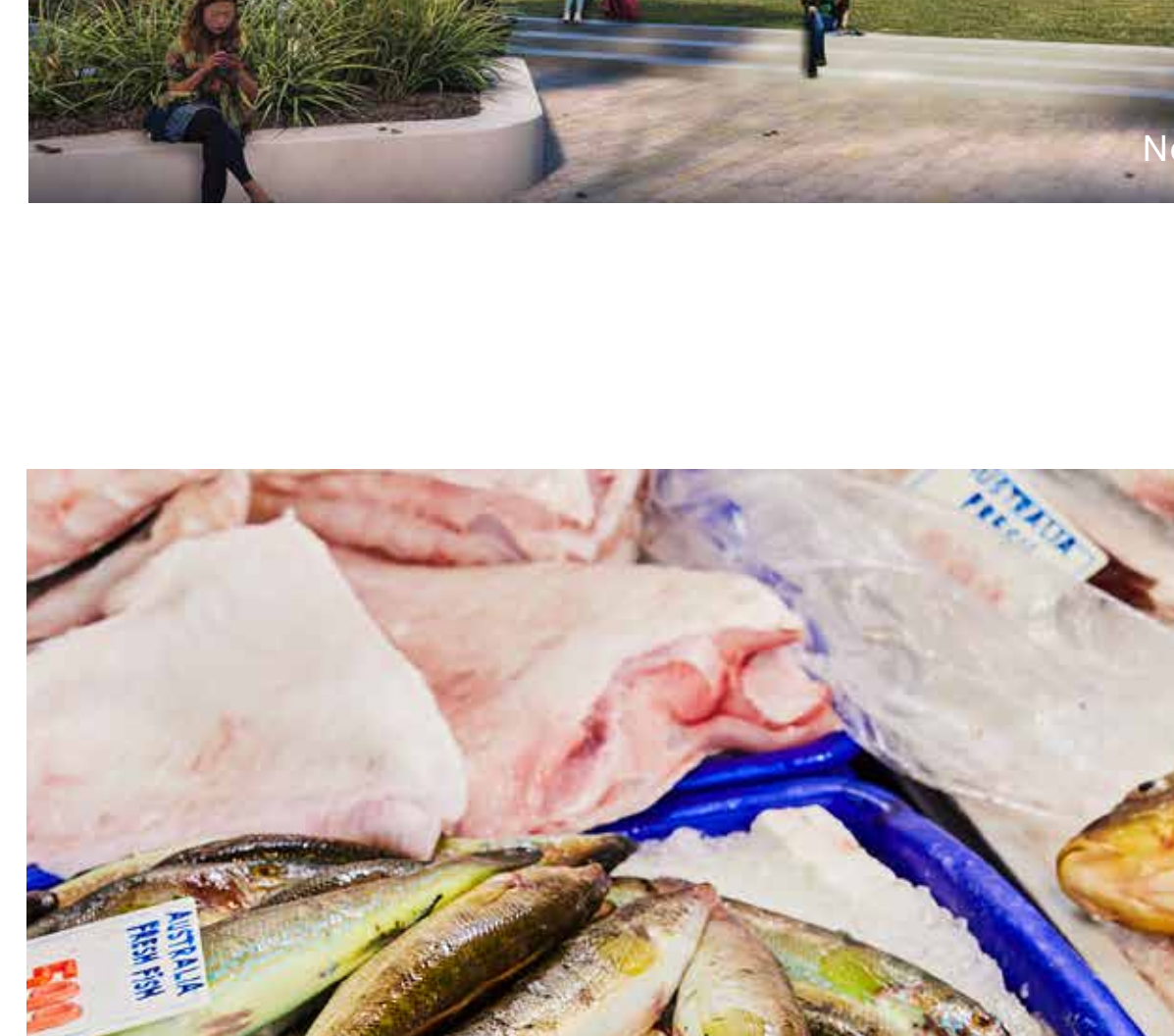
Maribyrnong River Trail



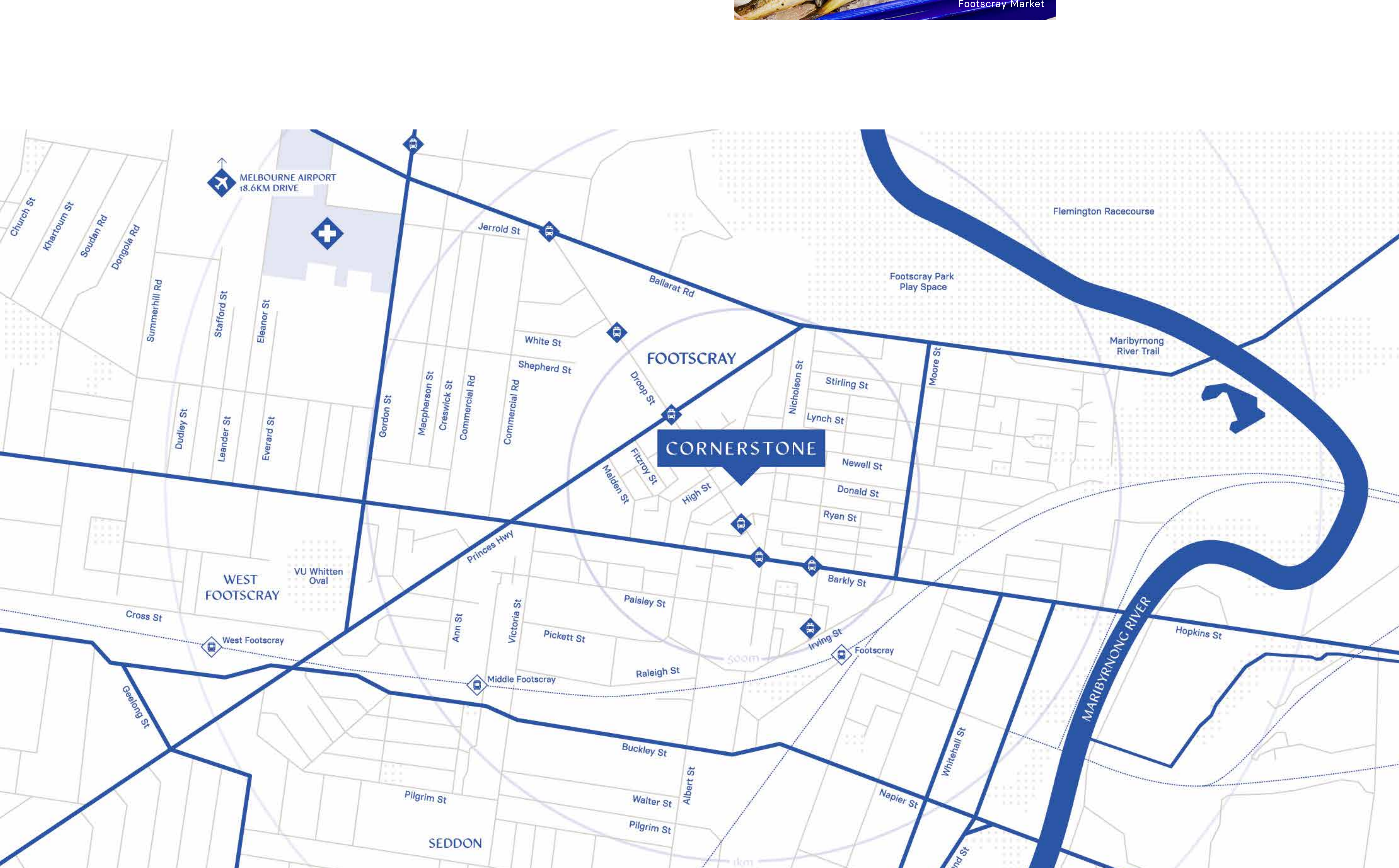
New St. Leon Footscray Hospital



Victoria University



Footscray Market



ON-SITE DISPLAY SUITE
OPEN BY APPOINTMENT

2B Droop Street, Footscray



For more information contact

Keith Jamieson
0409 352 504

John Morrison
0473 934 136

REGISTER NOW

FIRST NAME

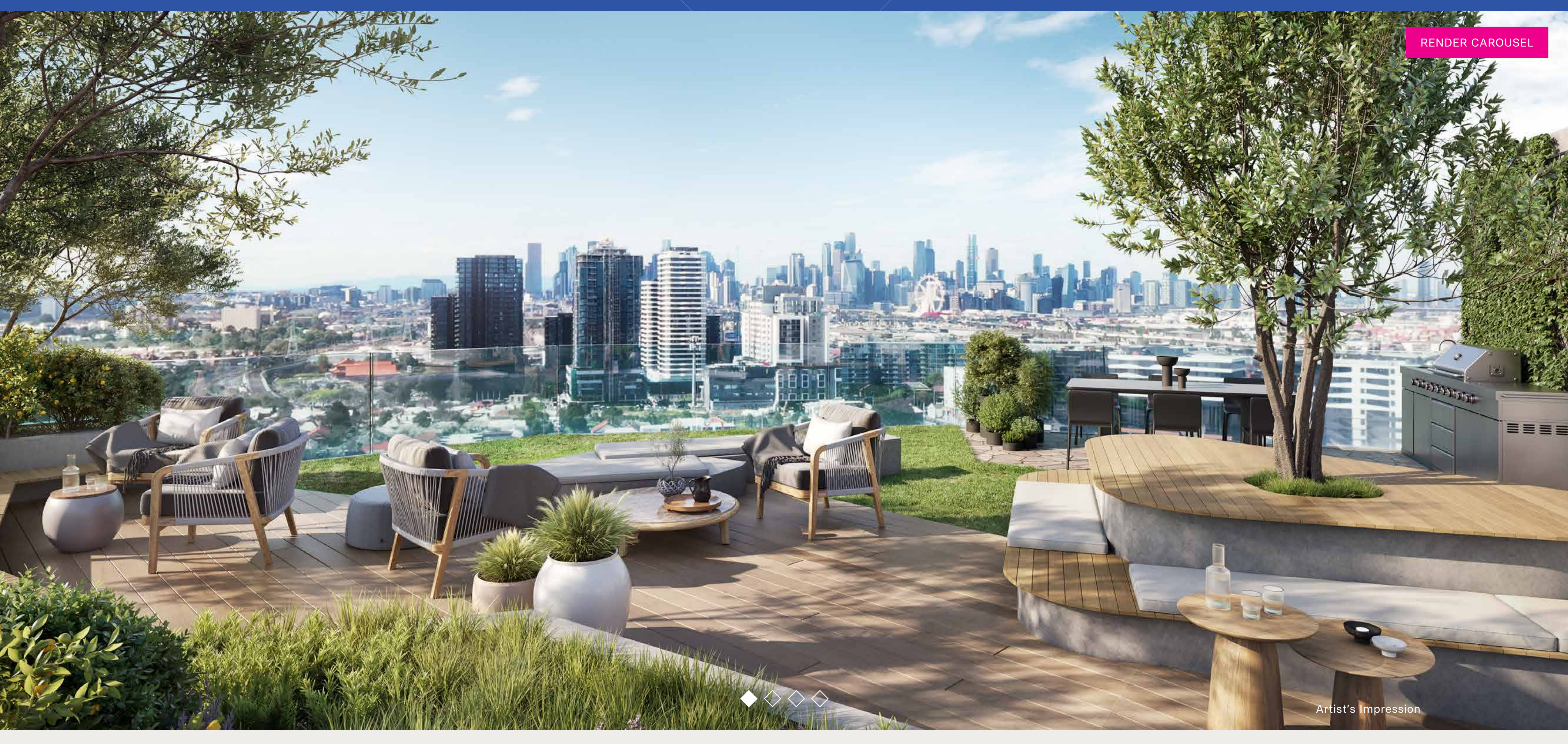
LAST NAME

EMAIL

PHONE

POSTCODE

REGISTER



RENDER CAROUSEL

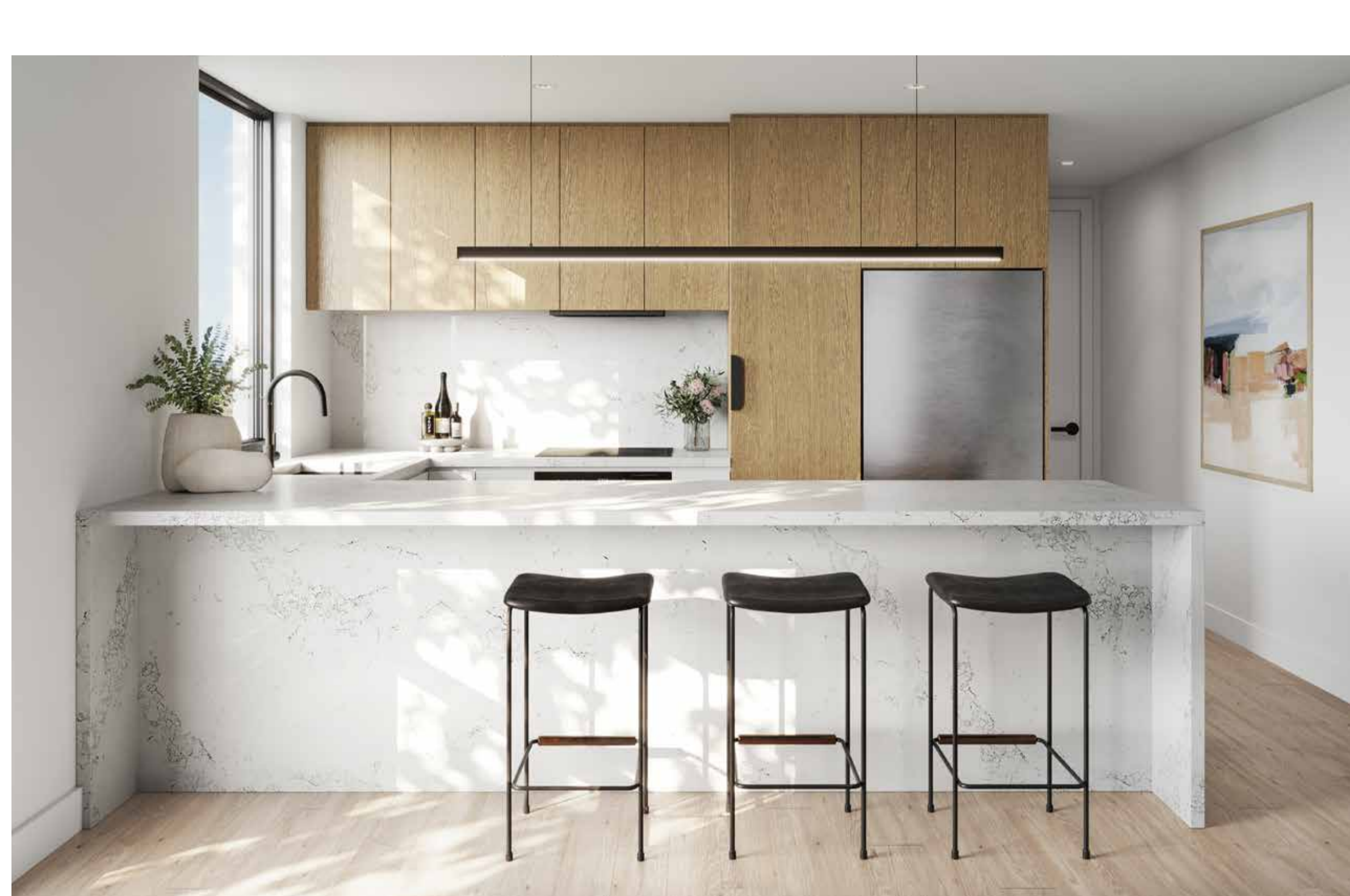
Artist's Impression

THE CENTRE OF LIVING IN THE VIBRANT HEART OF FOOTSCRAY



RENDER CAROUSEL

Artist's Impression



INTELLIGENT DESIGN

Thoughtfully designed to accommodate the bustling and diverse lifestyle of the modern resident.

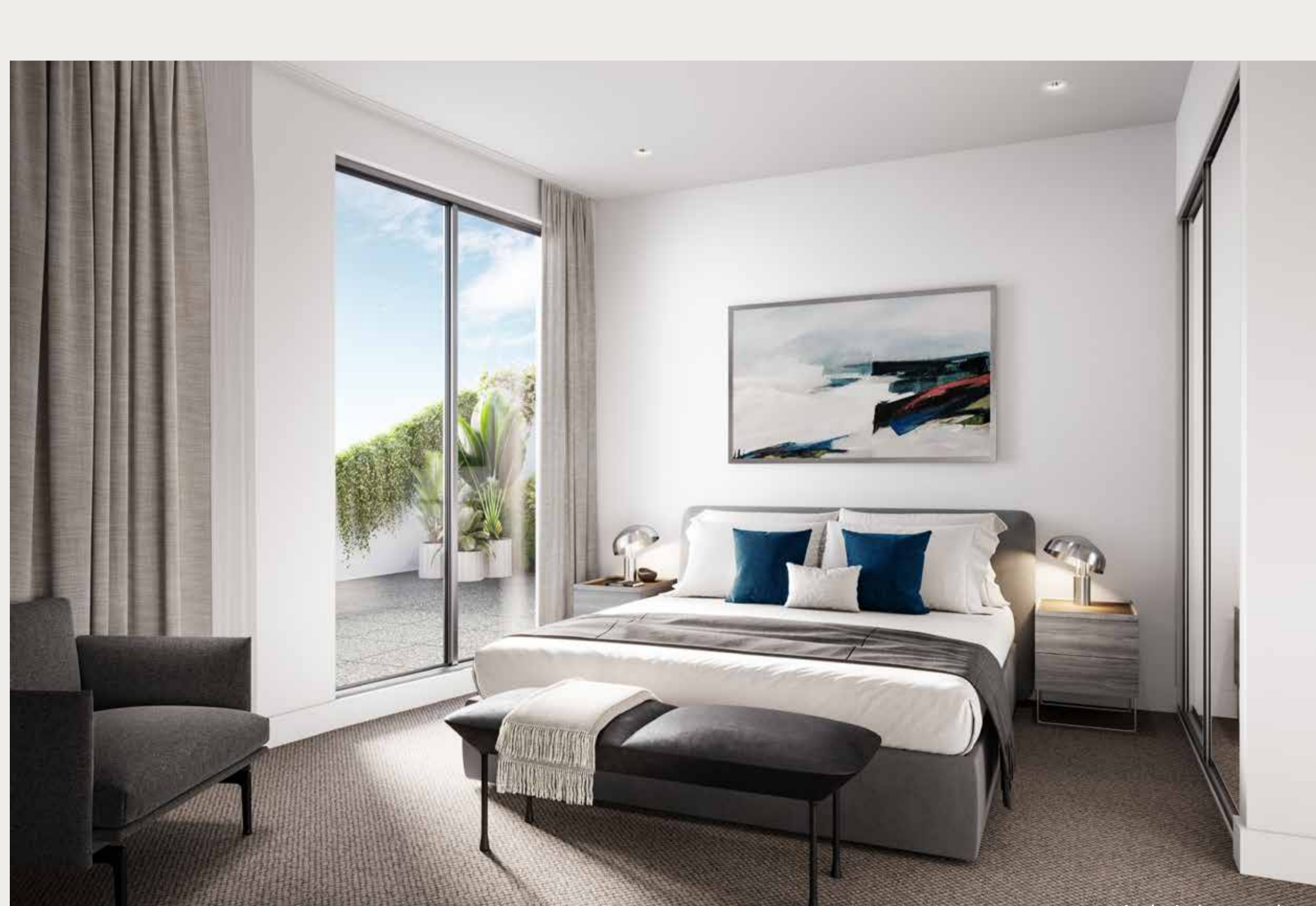
Cornerstone apartments boast an ensemble of clever design choices, including built-in joinery, a tucked-away European laundry, spacious open-plan living and abundant storage solutions. Residents are spoilt for choice between two schemes and expansive, private balconies that offer effortless indoor/outdoor living.

NEST IN YOUR PRIVATE SANCTUARY

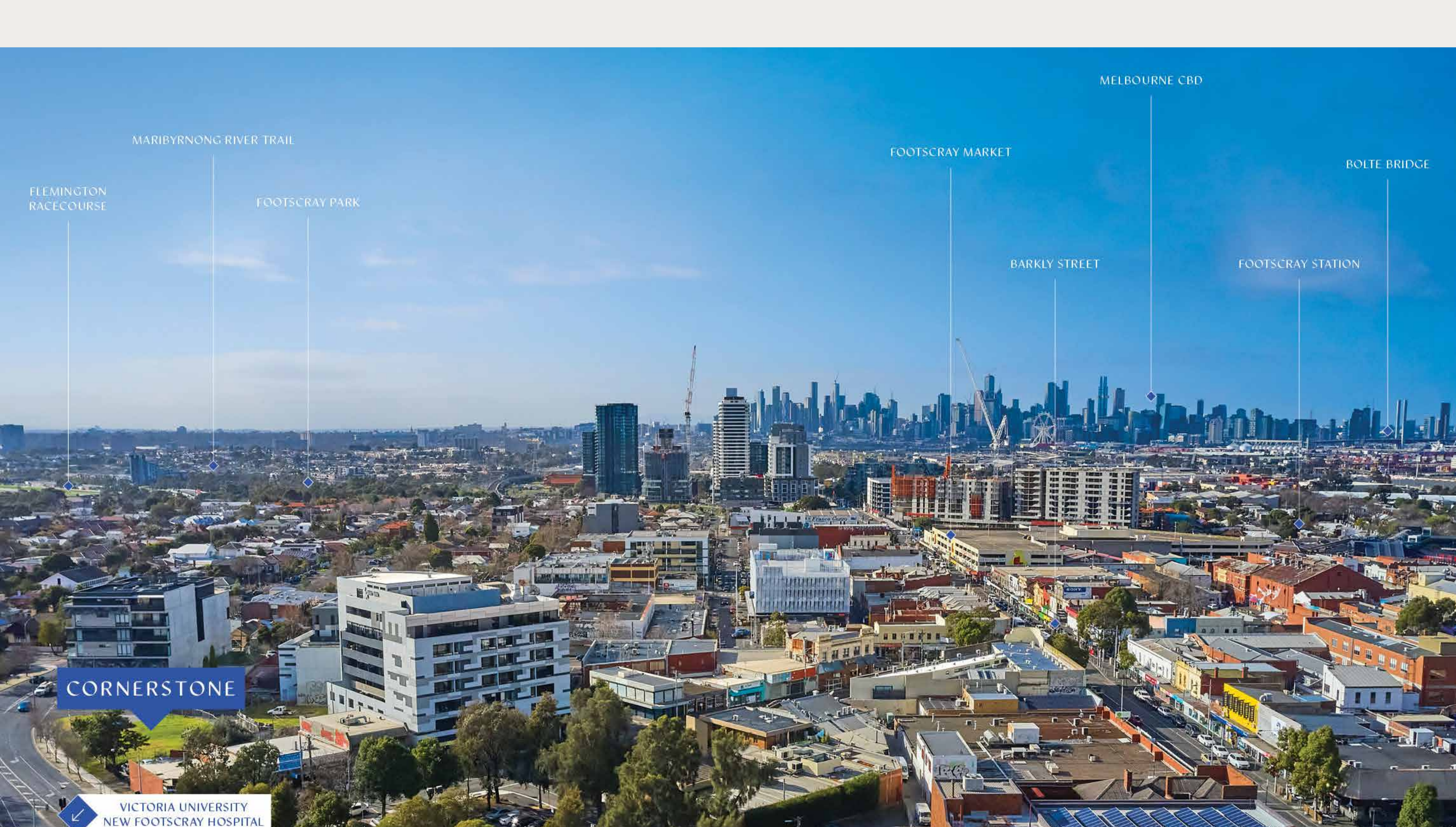
A tranquil retreat, each residence has been considerably crafted with liveability and comfort in mind.

Bedrooms feature integrated joinery that maximises storage for the modern resident, as well as double-glazed windows that bathe the residence in an abundance of natural light.

Bathrooms are an oasis of calm, featuring handpicked brushed nickel or matte black tapware, natural stone finishes and clever storage solutions.



Artist's Impression



AN EXPERIENCED TEAM



Developer



Project Architect & Interiors



Architect

WORK, STUDY AND PLAY IN THE HEART OF FOOTSCRAY

Ideally located within metres of Barkly Street, residents are a short walk away from a vast array of renowned eateries and bars.

REASONS TO INVEST IN FOOTSCRAY

In recent years, Footscray has undergone urban renewal as a result of a spill-over of growth from Melbourne.

Teeming with investment opportunity, the once-industrial suburb boasts a local culture and vibrancy unlike any other, as population is projected to more than double by 2031.

A 5km extension of Melbourne's CBD, Footscray is home to the esteemed Victoria University and VU Whitten Oval. Surrounded by a myriad of parklands and exceptional transport connections, Footscray is recognised by the Victorian Government as a priority precinct, with total Government infrastructure investment estimated at \$31 billion by 2026.



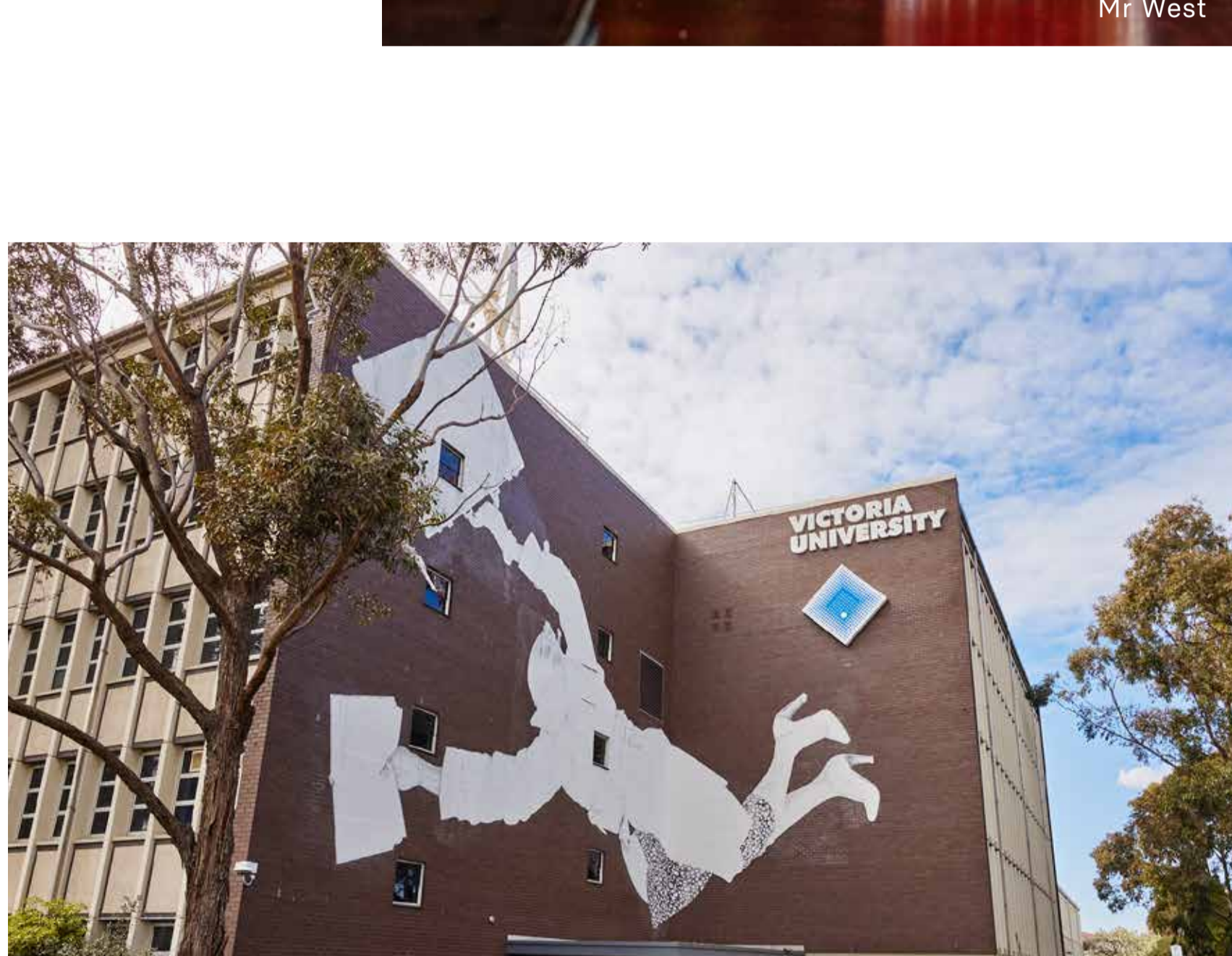
Maribyrnong River Trail



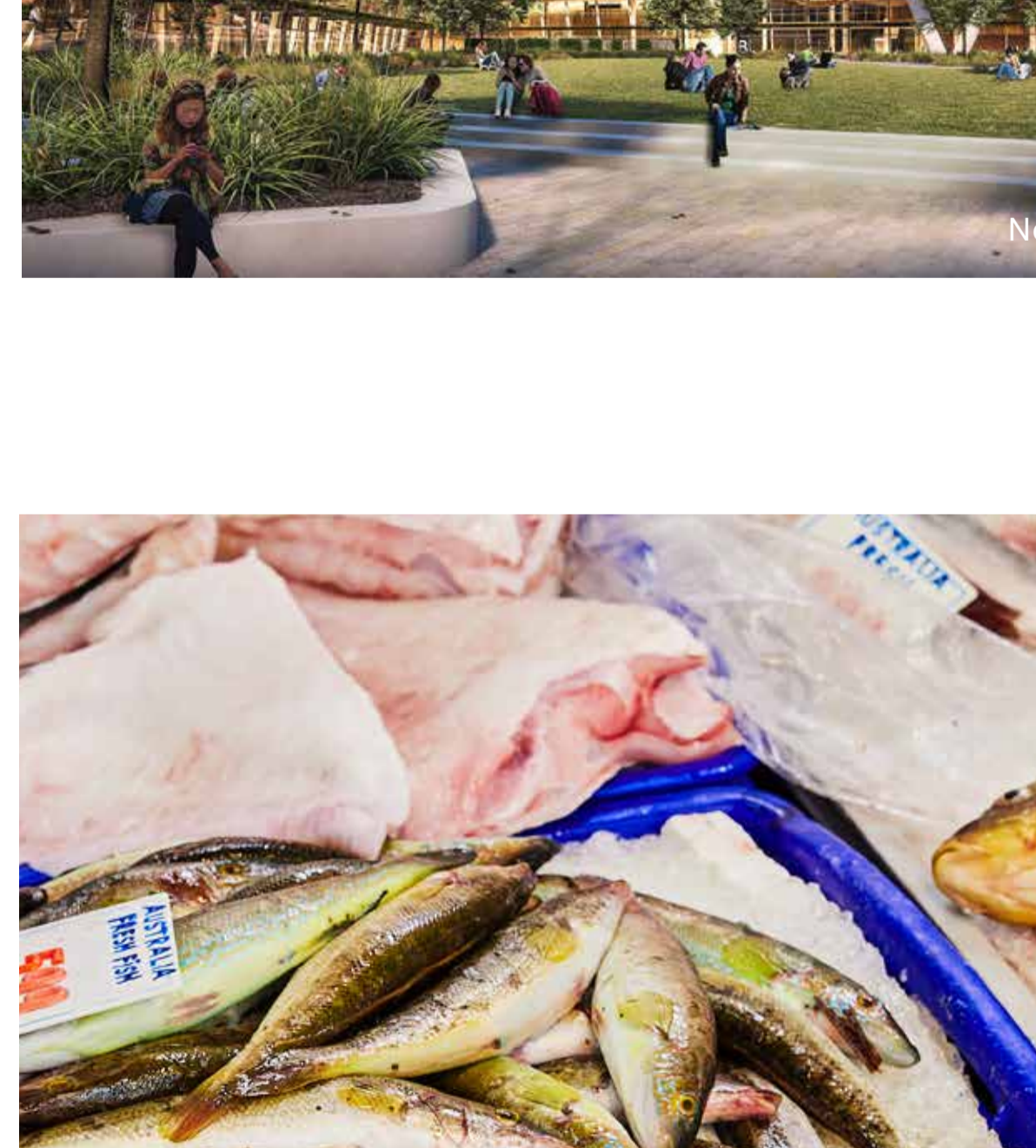
Mi West



New St EB Footscray Hospital



Victoria University

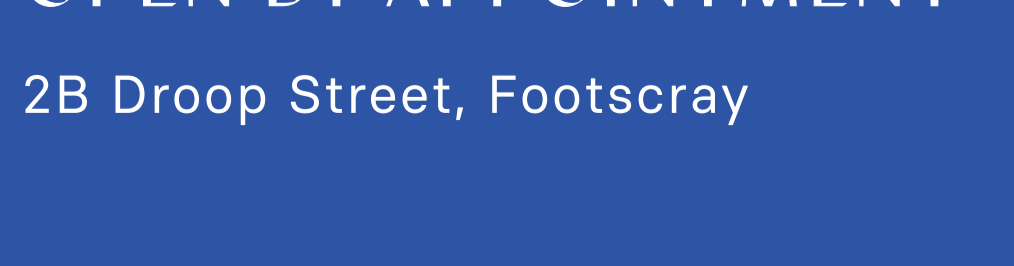


Footscray Market



ON-SITE DISPLAY SUITE OPEN BY APPOINTMENT

2B Droop Street, Footscray



For more information contact

Keith Jamieson
0409 352 504

John Morrison
0473 934 136

REGISTER NOW

FIRST NAME

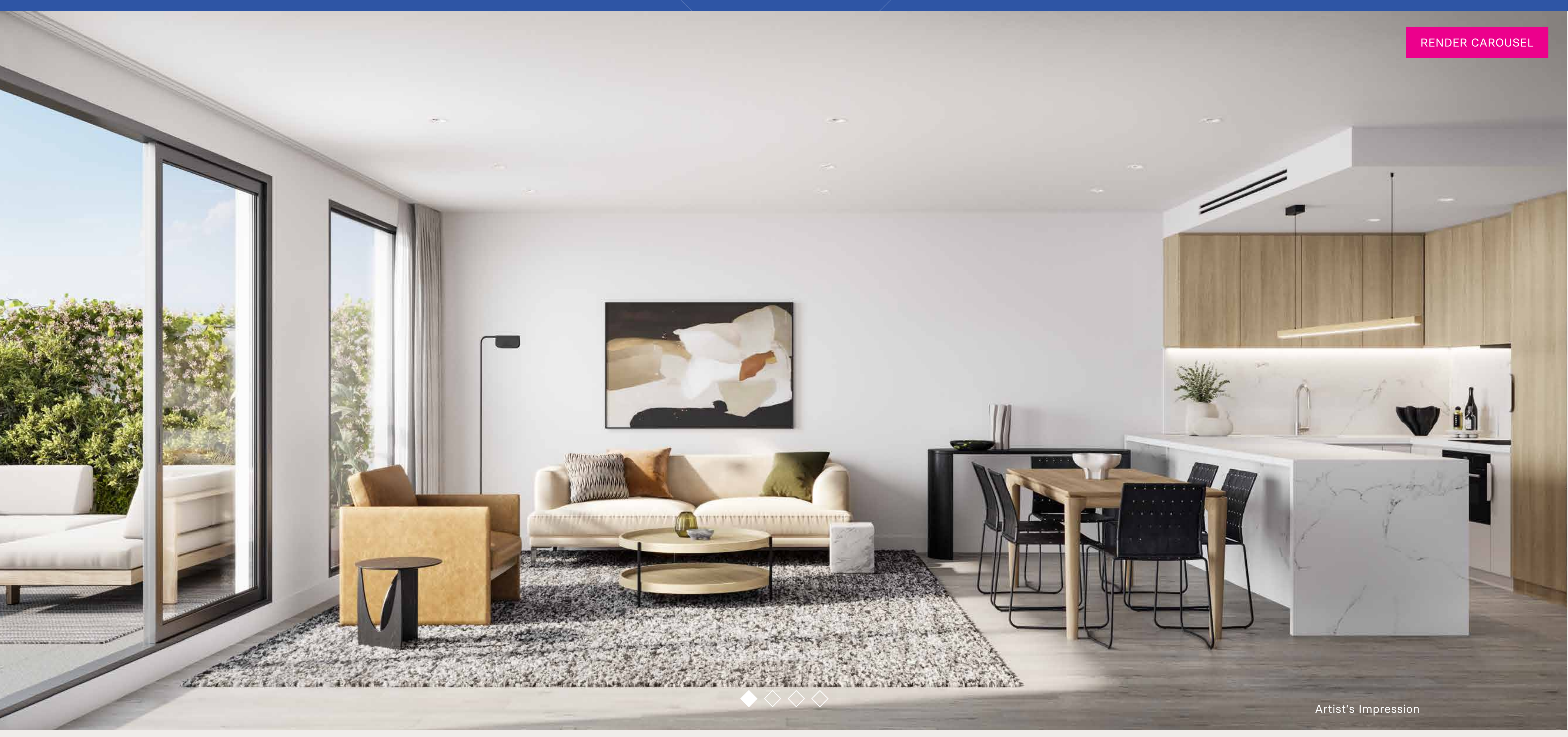
LAST NAME

EMAIL

PHONE

POSTCODE

REGISTER



RENDER CAROUSEL

Artist's Impression

THE CENTRE OF LIVING IN THE VIBRANT HEART OF FOOTSCRAY



RENDER CAROUSEL

Artist's Impression

INTELLIGENT DESIGN

Thoughtfully designed to accommodate the bustling and diverse lifestyle of the modern resident.

Cornerstone apartments boast an ensemble of clever design choices, including built-in joinery, a tucked-away European laundry, spacious open-plan living and abundant storage solutions. Residents are spoilt for choice between two schemes and expansive, private balconies that offer effortless indoor/outdoor living.



Artist's Impression

NEST IN YOUR PRIVATE SANCTUARY

A tranquil retreat, each residence has been considerably crafted with liveability and comfort in mind.

Bedrooms feature integrated joinery that maximises storage for the modern resident, as well as double-glazed windows that bathe the residence in an abundance of natural light.

Bathrooms are an oasis of calm, featuring handpicked brushed nickel or matte black tapware, natural stone finishes and clever storage solutions.



Artist's Impression



AN EXPERIENCED TEAM



Developer



Project Architect & Interiors



Architect

WORK, STUDY AND PLAY IN THE HEART OF FOOTSCRAY

Ideally located within metres of Barkly Street, residents are a short walk away from a vast array of renowned eateries and bars.

REASONS TO INVEST IN FOOTSCRAY

In recent years, Footscray has undergone urban renewal as a result of a spill-over of growth from Melbourne.

Teeming with investment opportunity, the once-industrial suburb boasts a local culture and vibrancy unlike any other, as population is projected to more than double by 2031.

A 5km extension of Melbourne's CBD, Footscray is home to the esteemed Victoria University and VU Whitten Oval. Surrounded by a myriad of parklands and exceptional transport connections, Footscray is recognised by the Victorian Government as a priority precinct, with total Government infrastructure investment estimated at \$31 billion by 2026.



Maribyrnong River Trail



Mel West



New St. Elizabeth's Footscray Hospital



Victoria University



Footscray Market



ON-SITE DISPLAY SUITE OPEN BY APPOINTMENT

2B Droop Street, Footscray



For more information contact

Keith Jamieson
0409 352 504

John Morrison
0473 934 136

REGISTER NOW

FIRST NAME

LAST NAME

EMAIL

PHONE

POSTCODE

REGISTER

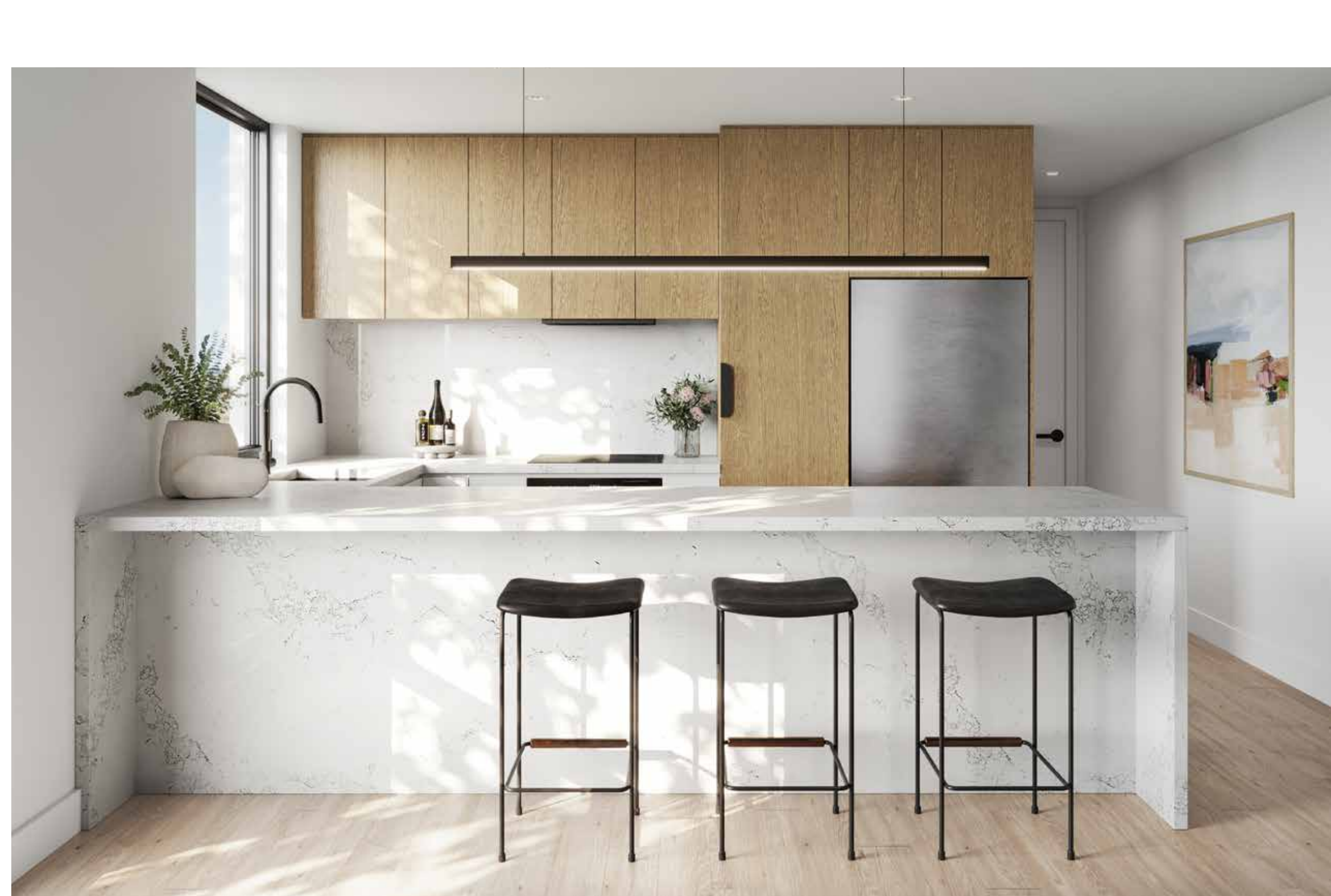


RENDER CAROUSEL

THE CENTRE OF LIVING
IN THE VIBRANT HEART
OF FOOTSCRAY



RENDER CAROUSEL



INTELLIGENT DESIGN

Thoughtfully designed to accommodate the bustling and diverse lifestyle of the modern resident.

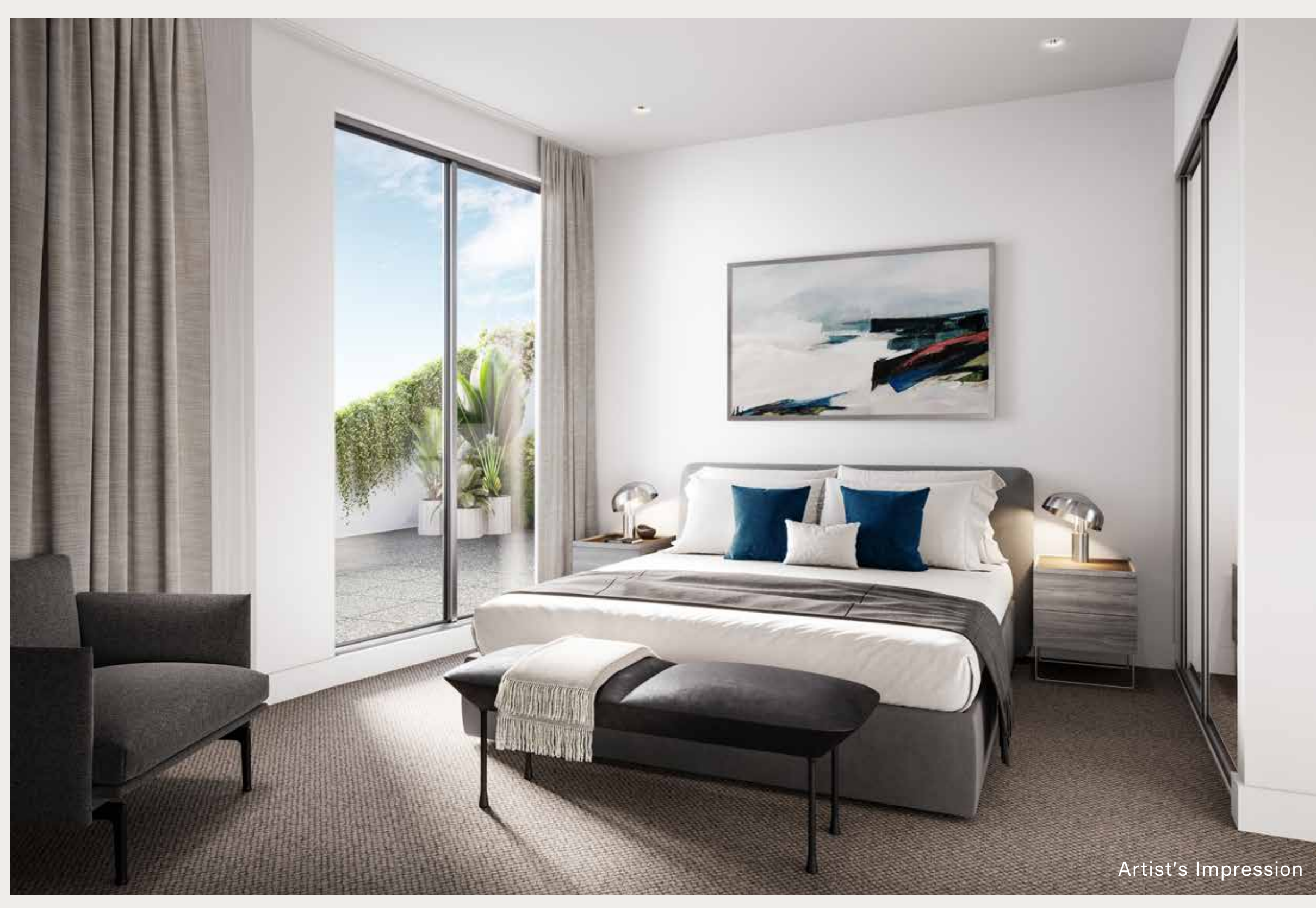
Cornerstone apartments boast an ensemble of clever design choices, including built-in joinery, a tucked-away European laundry, spacious open-plan living and abundant storage solutions. Residents are spoilt for choice between two schemes and expansive, private balconies that offer effortless indoor/outdoor living.

NEST IN YOUR
PRIVATE SANCTUARY

A tranquil retreat, each residence has been considerably crafted with liveability and comfort in mind.

Bedrooms feature integrated joinery that maximises storage for the modern resident, as well as double-glazed windows that bathe the residence in an abundance of natural light.

Bathrooms are an oasis of calm, featuring handpicked brushed nickel or matte black tapware, natural stone finishes and clever storage solutions.



Artist's Impression



AN EXPERIENCED TEAM



Developer



Project Architect & Interiors



Architect

WORK, STUDY AND PLAY IN
THE HEART OF FOOTSCRAY

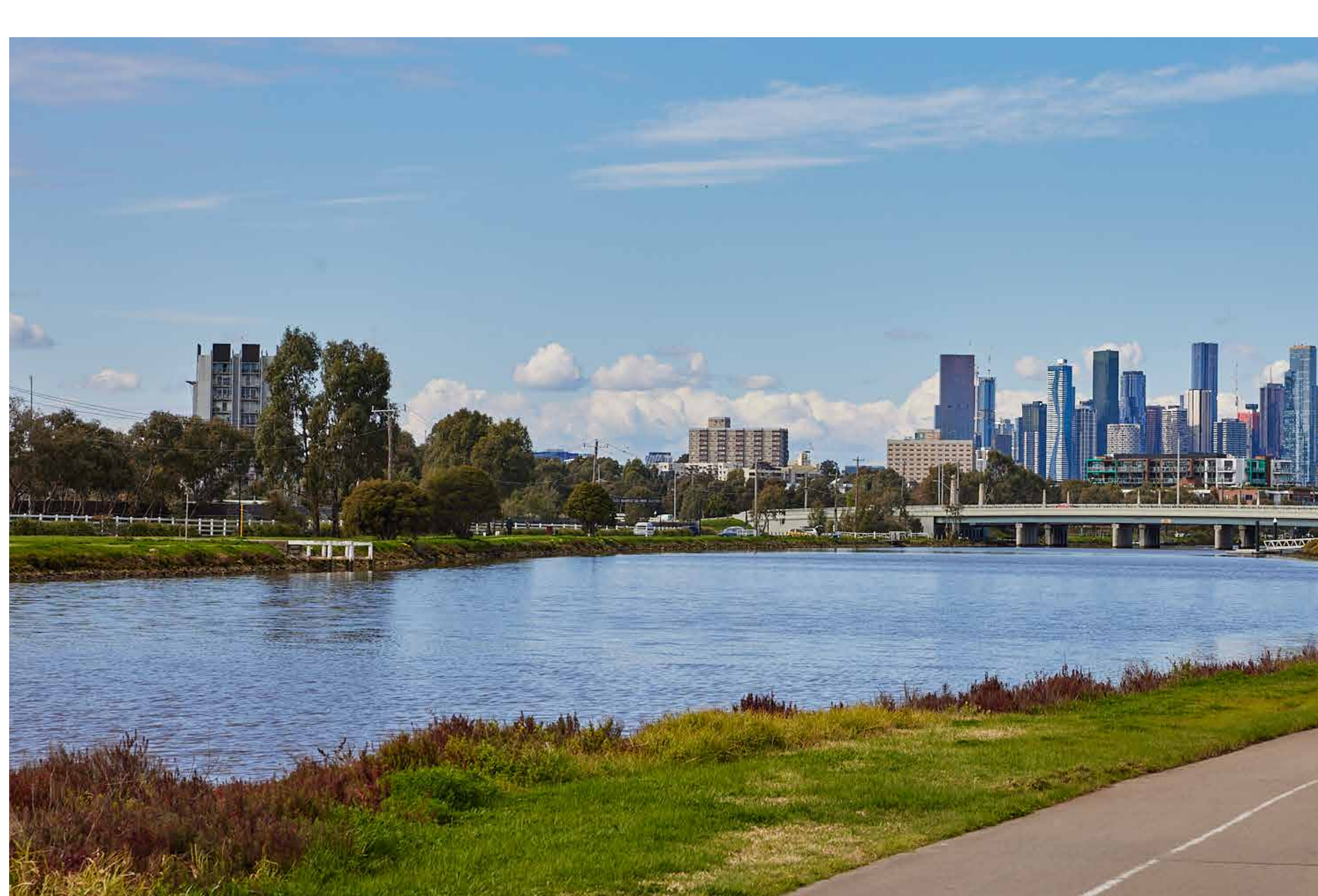
Ideally located within metres of Barkly Street, residents are a short walk away from a vast array of renowned eateries and bars.

REASONS TO INVEST
IN FOOTSCRAY

In recent years, Footscray has undergone urban renewal as a result of a spill-over of growth from Melbourne.

Teeming with investment opportunity, the once-industrial suburb boasts a local culture and vibrancy unlike any other, as population is projected to more than double by 2031.

A 5km extension of Melbourne's CBD, Footscray is home to the esteemed Victoria University and VU Whitten Oval. Surrounded by a myriad of parklands and exceptional transport connections, Footscray is recognised by the Victorian Government as a priority precinct, with total Government infrastructure investment estimated at \$31 billion by 2026.



Maribyrnong River Trail



Mel West



New St. Albans Footscray Hospital



Victoria University



Footscray Market



ON-SITE DISPLAY SUITE
OPEN BY APPOINTMENT

2B Droop Street, Footscray



For more information contact
Keith Jamieson
0409 352 504
John Morrison
0473 934 136

REGISTER NOW

FIRST NAME

LAST NAME

EMAIL

PHONE

POSTCODE

REGISTER